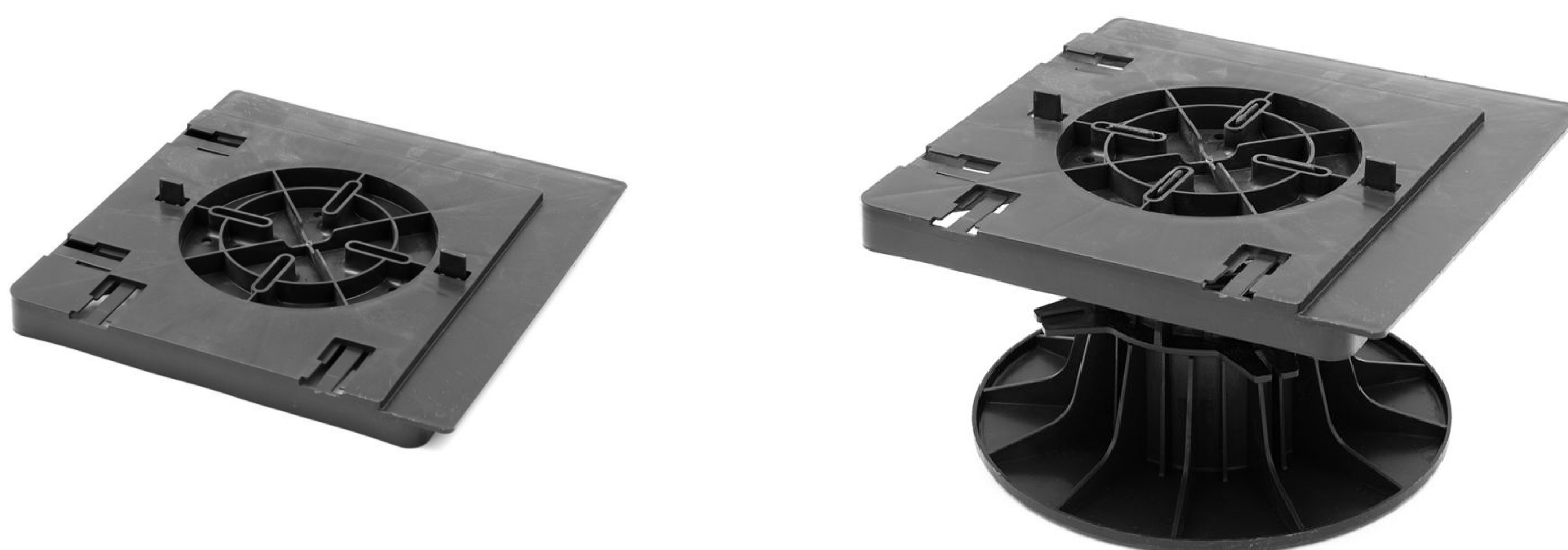




## Slab plate

Stabilizes the slab for installation against a wall.



### Application & use

**Stabilizes the slab for installation against a wall. Combined with the lateral support it allows the realization of finishing with plinth or the creation of stairs.**

Increases the height of the pedestal by 13 mm.  
Compatible with all pedestals except 8/20 mm.

### Technical Characteristics

**Composition :** polypropylene (recycled and recyclable)

**Color :** black

**Origine :** France

**Garantee :** 10 years

**Conformity :** norm DTU 43.1

**Use :** pedestrian only

**Dimensions :** 206 mm x 206 mm

**Resistance to temperatures :** from -40°C to +60°C

**Resistances to atmospheric agents :** UV and freeze

### Product Advantage

- + Allows the aesthetic finish of a terrace on pedestals
- + Allows slabs against a wall to be installed and stabilized
- + Allows to realize the closing of the terrace thanks to the lateral support
- + Allows the creation of stair steps
- + Fits on the head of the pedestal without fixing
- + Breakable lugs